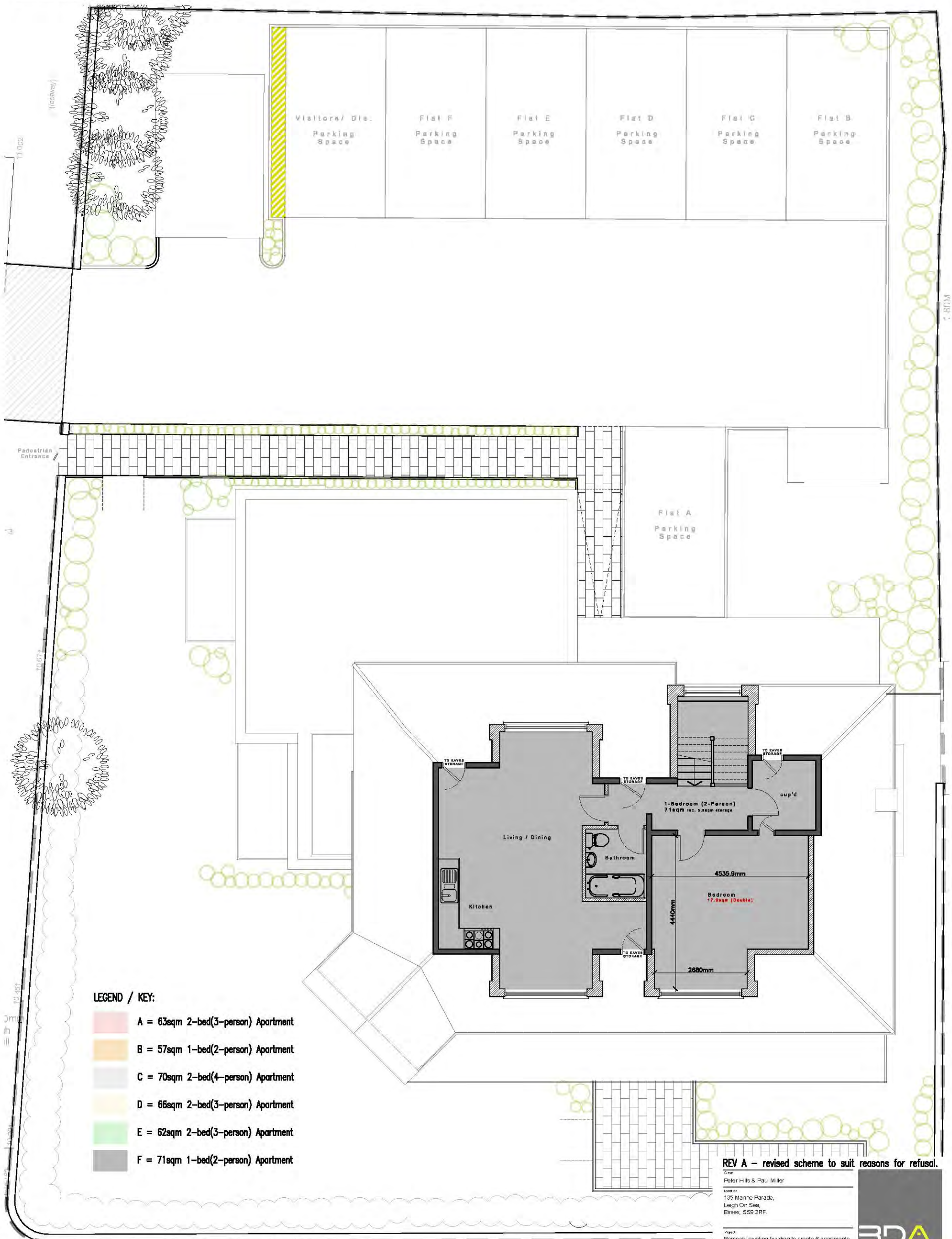


PLANNING DRAWING



© Copyright reserved. All rights reserved.
 This drawing is copyright of BDA. No reproduction or copying without permission of BDA.
 BDA is a registered charity. No part of this drawing may be reproduced or transmitted in any form or by any means, electronic, mechanical, photocopying, recording, or by any information storage and retrieval system, without the prior written permission of BDA.
 Do not scale from this drawing - Use figured dimensions only. (All elevations & dimensions to be checked on site)



LEGEND / KEY:

- A = 63sqm 2-bed(3-person) Apartment
- B = 57sqm 1-bed(2-person) Apartment
- C = 70sqm 2-bed(4-person) Apartment
- D = 66sqm 2-bed(3-person) Apartment
- E = 62sqm 2-bed(3-person) Apartment
- F = 71sqm 1-bed(2-person) Apartment

REV A - revised scheme to suit reasons for refusal.

Client
 Peter Hills & Paul Miller
 Location
 135 Marine Parade,
 Leigh On Sea,
 Essex, SS9 2RF.

Project
 Remodel existing building to create 6-apartments.

(Proposed Second Floor Plan)

Drawn: cp
 Checked: srf
 Date: 1:100
 Date: August 2016
 Drawn by No: 17.195/09
 Rev: A

BDA
 ARCHITECTURE
 RIBA
 Chartered Practice
 Studio on the Green
 Bishops Cleeve, Gt C. Up.
 One Road, Clarendon, Essex, SS42 0BA
 Telephone: 01702 548 538
 www.bdaarchitecture.co.uk

PROPOSED SECOND FLOOR PLAN

1:100